



DELTA

Community Flood Lighting

Curvey & Aesthetics outlook

- Simple
- Economical
- Reliable

Application

Security, facade, industrial, warehouse, community, etc
Architectural and landscape.

Features

- High pressure die cast aluminium alloy housing.
- Corrosion resistant.
- Finished with polyester powder paint.
- Standard colour grey.
- Bracket made of galvanized steel painted in grey colour.
- Standard color grey.
- Anti-aging silicone rubber gasket.
- Clear tempered glass protector.
- Stainless steel screws.
- Operating temperature (Ta) -25°C ~ 40°C.

Characteristic

- Light source : Mid Power LED
- Power correction factor : > 0.9
- Insulation : Class 1
- Compliance : IEC 60598-1
IEC 60598-2-5
- Colour rendering (CRI) : ≥ 70
- Colour temperature (CCT) : 3000K ~ 6000K
- Other CCT & CRI available upon request
- Weight : 1.5kg ~10.0kg

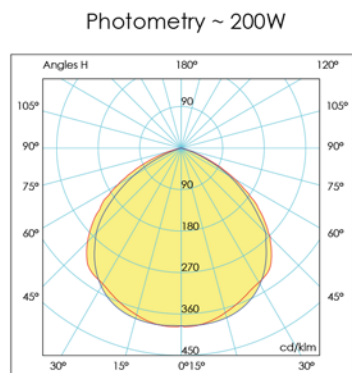
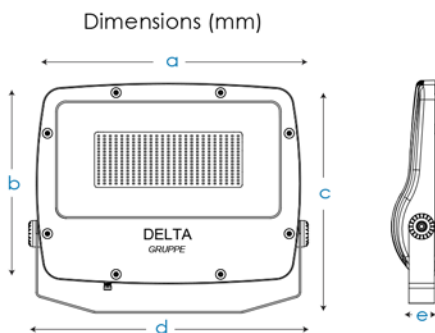
Specification

Type	Delta series
Light source	Integral LED-module
Wattage	10W ~ 240W
Nominal efficacy	100 ~ 120 lm/W
Color temperature (CCT)	3000K ~ 6000K
Color rendering Index (CRI)	≥ 70. <i>Other CRI available upon request (≥ 80, ≥ 90)</i>
Useful life	50,000 hours ~ Base on the light source
Operating temperature range (Ta)	-25° ~ 40°
Driver	Built-in electronic system
Main voltage	100~277V / 50~60Hz
Material	Housing : high pressure die-cast aluminium alloy Protector : Clear tempered flat glass Finishing : Polyester powder paint
Color	Grey. <i>Other RAL colors available on request</i>
Maintenance	Easy maintenance unscrew to replace driver and LED module

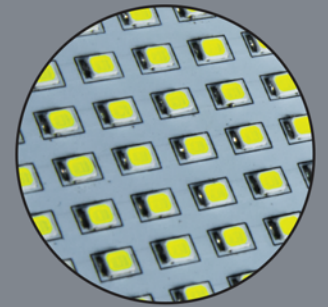
Ordering Code Dimmensions

Code	Wattage	Nominal Flux	a	b	c	d	e
DEL01060	10W	1000	220	188	221	245	53
DEL02060	20W	2000	220	188	221	245	53
DEL03060	30W	3000	220	188	221	245	53
DEL05060	50W	5000	290	221	255	314	68
DEL08060	80W	8000	391	296	339	432	72
DEL10060	100W	10000	391	296	339	432	72
DEL12060	120W	12000	451	343	402	493	72
DEL15060	150W	15000	451	343	402	493	72
DEL18060	180W	18000	501	381	435	543	88
DEL20060	200W	20000	501	381	435	543	88
DEL24060	240W	24000	501	381	435	543	88

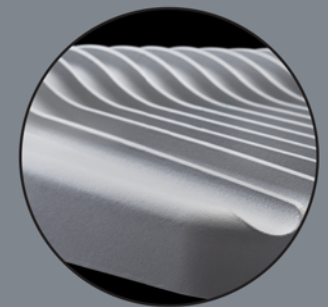
* The above ordering code is base on CCT~6000K



Curvey & Aesthetics design



LED Chip



ThermalSafe® Thermal system



Adjustable Angle

